



Exodus / A-DAP TEE Post Gong System

A variation of the Exodus Line of Steel Targets



The Exodus Line of Steel Targets is our premium line of high quality AR550 steel target systems. Each plate is manufactured to exacting standards to offer safe, consistent, and long-lasting performance. The material used for these systems is some of the best AR550 on the planet, and it is purpose built for serious training with all modern firearms. BEFORE SHOOTING: FULLY READ THIS MANUAL AND THE INCLUDED SAFE SHOOTING PAMPHLET WE INCLUDE WITH EACH SHIPMENT. ADDITIONALLY, READ THE STICKER ON THE BACK OF YOUR TARGET PLATE PRIOR TO SHOOTING. ALWAYS OBEY OUR SAFETY REQUIREMENTS. UNDER NO CIRCUMSTANCES SHOULD YOU ALTER OR MISUSE YOUR SYSTEMS. ALWAYS WEAR APPROVED HEARING AND SAFETY GEAR WHENEVER HANDLING A FIREARM. As always, if you have ANY questions, please contact us via email PRIOR to using our products. The Customer Service email is info@tatargets.com. You may also call 1-833-746-4785 M-F during business hours. If questions EVER exist, cease use of your target until we can address your questions and/or concerns.

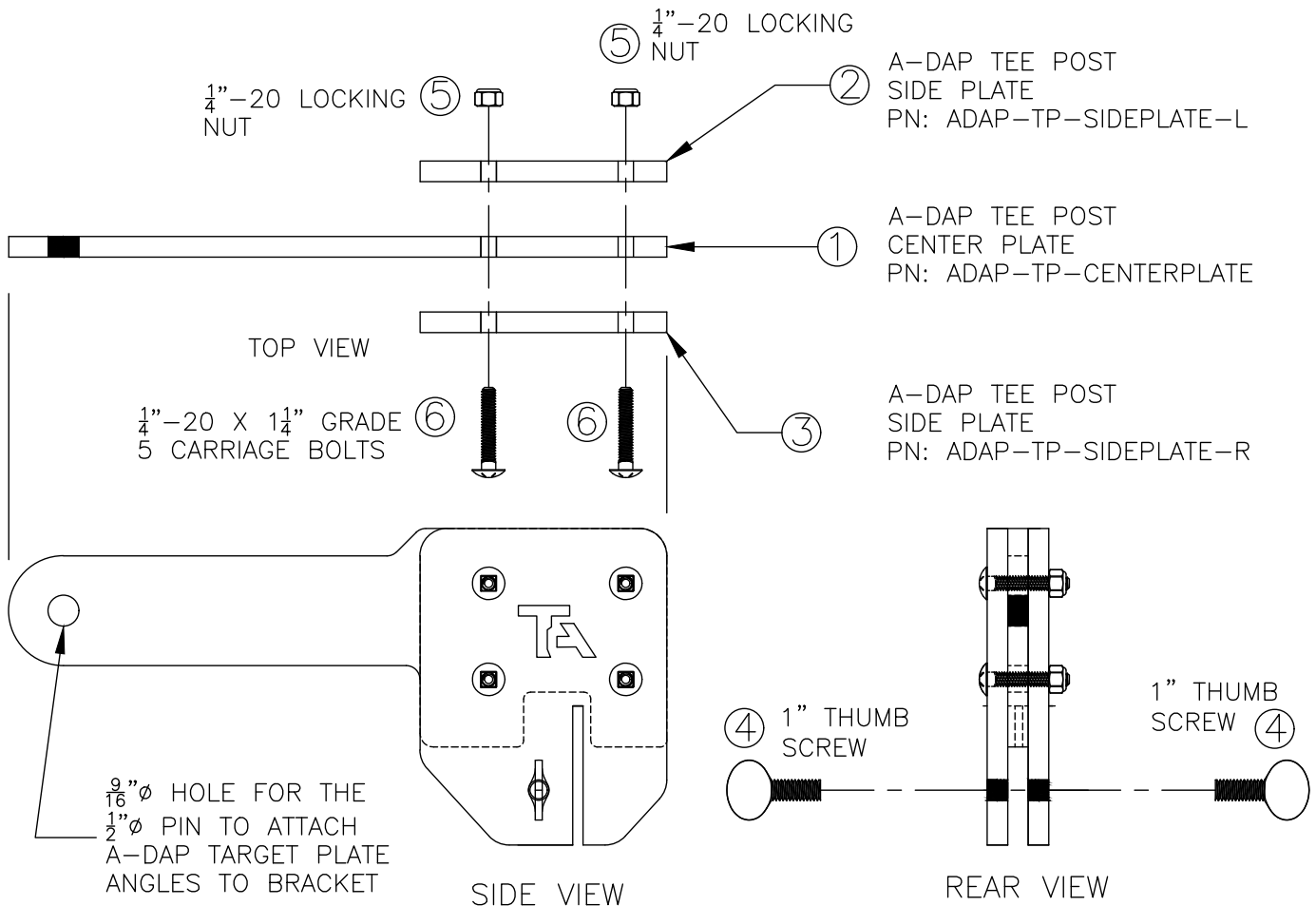
***BEFORE YOU BEGIN:** While the TARGET PLATES are close range rifle rated, the TEE POST IS NOT! Damage WILL occur to the Tee Post if struck. NEVER ENGAGE WITH IMPROPER AMMUNITION OR AT CLOSER DISTANCES THAN SHOWN ON OUR SAFETY DOCUMENTATION FOR THE Exodus SYSTEMS.

****Lost Components:** During setup, tear-down and transport it is extremely important to make sure you do not lose any of your hardware or components. Always be mindful of how and where you tear down your base to reduce the risk of losing hardware or components.

I.) Tee Post Gong Bracket:

Note: The Tee Post Bracket is a welded bracket and includes all necessary hardware. (SKU: ADAP-TP-ASSEMBLY)

- 1.) Verify all components are present.
- 2.) Use Post driver or sledgehammer (CAREFULLY) to pound TEE post into ground
 - a. Post must be at least 10" of depth below undisturbed surface.
- 3.) Loosen (Or remove thumb screws), slide the A-DAP Bracket OVER your Tee Post
- 4.) In the event that the bracket does NOT slide over the Tee Post, loosen the FOUR locking nuts on the bracket (#5 on diagram)
- 5.) This will allow enough clearance to slide over deformed or slightly out of spec posts
- 6.) Re-tighten the 1/4" Locking Nuts (#5 on diagram)
- 7.) Hand Tighten the Thumb Screws (#4 on diagram)
- 8.) Use the 1/2" Clevis pin and clip on your A-DAP target plate, slide into angles on back of the target plate THROUGH the Tee post bracket and out the other side of the second angle.
- 9.) Install hairpin clip into the Clevis pin to secure the target plate
- 10.) You are ready to use.



Hardware and Component Table. Verify ALL components are present before use!

#	Description of Component	QTY EA
1	Center Section of Bracket	1
2	Left Side Plate of Bracket	1
3	Right Side Plate of Bracket	1
4	3/8"-16 X 1" Thumb Screw	2
5	1/4"-20 Locking Nuts	4
6	1/4"-20X1 1/4" Carriage Bolts	4

III.) Hardware Notes:

The Exodus / A-DAP Tee Post Mount does NOT include a 1/2" Clevis Pin and/or clip. We include this pin and clip with each A-DAP target plate. You should utilize the current pin that is on your A-DAP target plate. Should you need another pin and/or clip, you can find them here:

<https://tatargets.com/product/replacement-a-dap-pin-and-clip/>

All other hardware necessary to affix this bracket to a Tee Post is included.

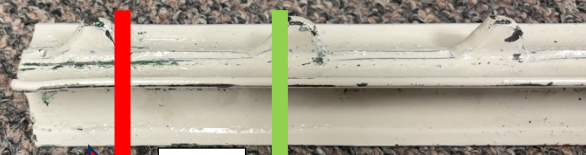
IV.) Tee Post Selection:

When Choosing your Tee Posts, choose a post that is straight and true and one that does not have a bent, crooked, or palmated top. Most hardware stores can cut your Tee Post to have a straight and true end. Always Treat Tee Posts with care as they could have sharp spots that could result in injury.

Many Tee Posts have studs along the "spine" for stretching fencing. If you find that your Tee Post has a stud less than 1" from the end of the post, it MAY inhibit FULL insertion onto the post. We recommend only purchasing tee posts that have studs 3/4" OR MORE from the cut end of the post. Additionally, your hardware store can cut your post in such a way that the last stud closest to the end is at least 1" from the end. Below is a photo showing a stud too close to the end of the post. If you have questions about this, please email us at info@tatargets.com PRIOR to using this bracket! Photo of improperly placed stud for reference:

If your Tee Post has studs as shown, be sure to have the hardware store cut along the red line, right BELOW the last stud as shown for proper fitment of Tee Post Bracket. Ideally You should have >1" from end of post to last stud.

End of
post (New
Cut)



Studs this close to the end will not allow bracket to fully seat. Bracket will slide on and function, but it is ideal to have MORE room than shown for full interfacing.



V.) Exodus Target Plates:

The Exodus Line (A-DAP) Target Plates are manufactured from a premium grade, close range rifle rated AR550 steel. This is the strongest steel we offer, perfect for high volume training.

Materials Used: The Exodus / A-DAP Target Plates are a premium Swedish AR550 steel. This steel is subject to the caliber, velocity, and distance restrictions listed below. **UNDER NO CIRCUMSTANCES SHOULD YOU ENGAGE THIS TARGET AGAINST THESE REQUIREMENTS. DOING SO WILL LIKELY RESULT IN DAMAGE TO THE TARGET SYSTEM, PROPERTY, AND MAY RESULT IN SERIOUS INJURY OR EVEN DEATH. ALWAYS FOLLOW OUR POSTED SAFETY REQUIREMENTS.**

3/8" AR550 A-DAP Steel Target Plates:

Weapon Type	Caliber	Velocity	Bullet Make	Distance
Pistol	22LR	All Velocities	FMJ, HP, Lead	10 Yards
Rifle	22LR	All Velocities	FMJ, HP, Lead	10 Yards
Centerfire Pistol	.380, 9mm, 40, 45ACP, 10mm, 357 Sig	Up to 1500 FPS	FMJ, HP, TMJ, LEAD, Soft Point	10 Yards
Magnum Pistol Calibers	44 Mag, 454 Casull, etc	Up to 1800 FPS	FMJ, HP, TMJ, Lead, Soft Point	25 Yards
Pistol Caliber Carbines	9mm, 40, 45, 10mm, 44 mag, 357 mag, etc.	Up to 2,400 FPS	FMJ, HP, TMJ, Lead, Soft Point	25 Yards
Light Rifles	5.45X39, 5.56/.223, 7.62X39, 6.8SPC, 6.5 Grendel ETC	3,000 FPS OR LESS	FMJ, HP, TMJ, Lead, Soft Point, Ballistic Tip, Copper Expanding	50 yards
Larger Bore Rifles	.243, .308, 7mm-08, etc	3,000 FPS OR LESS	FMJ, HP, TMJ, Lead, Soft Point, Ballistic Tip, Copper Expanding	50 Yards
Magnum Rifles	.300 Win mag, 7mm mag, etc.	3,000 FPS OR LESS	FMJ, HP, TMJ, Lead, Soft Point, Ballistic Tip, Copper Expanding	100 Yards
Shotgun Slugs	.410, 20GA, 12 GA	ALL RIFLED SLUG VELOCITIES	Rifled Slugs	100 yards
Shotgun Buck Shot	.410, 16 GA, 20 GA, 28 GA, 12 GA	All Lead Buck Shot Variants	Buck Shot	30 Yards
Shotgun Bird Shot	.410, 16GA, 20 GA, 28 GA, 12 GA	All Lead Bird Shot Variants	Bird Shot	10 Yards
50BMG & Wildcat	NOT ALLOWED W/ Tee Post	NOT ALLOWED W/ Tee Post	NOT ALLOWED W/ Tee Post	NOT ALLOWED W/ Tee Post

Additional notes:

- RIFLE CALIBERS MUST BE 3,000 FPS OR LESS MUZZLE VELOCITY
- IF OVER 3,000 FPS, INCREASE DISTANCE BY 25 YARDS OVER ADVERTISED DISTANCE FOR EACH ADDITIONAL 100 FPS VELOCITY INCREASE
- Running plates at steeper lean angles will further resist damage from high velocity rounds, HOWEVER: All distances MUST be followed, regardless of which lean angle you choose to run!
- **NEVER ENGAGE TARGETS CLOSER THAN OUR DISTANCE RATINGS**

½” AR550 A-DAP Target Plates:

Weapon Type	Caliber	Velocity	Bullet Make	Distance
Pistol	22LR	All Velocities	FMJ, HP, Lead	10 Yards
Rifle	22LR	All Velocities	FMJ, HP, Lead	10 Yards
Centerfire Pistol	.380, 9mm, 40, 45ACP, 10mm, 357 Sig	Up to 1500 FPS	FMJ, HP, TMJ, LEAD, Soft Point	10 Yards
Magnum Pistol Calibers	44 Mag, 454 Casull, etc	Up to 1800 FPS	FMJ, HP, TMJ, Lead, Soft Point	25 Yards
Pistol Caliber Carbines	9mm, 40, 45, 10mm, 44 mag, 357 mag, etc.	Up to 2,400 FPS	FMJ, HP, TMJ, Lead, Soft Point	25 Yards
Light Rifles	5.45X39, 5.56/.223, 7.62X39, 6.8SPC, 6.5 Grendel ETC	3,000 FPS OR LESS	FMJ, HP, TMJ, Lead, Soft Point, Ballistic Tip, Copper Expanding	30 yards
Larger Bore Rifles	.243, .308, 7mm-08, etc	3,000 FPS OR LESS	FMJ, HP, TMJ, Lead, Soft Point, Ballistic Tip, Copper Expanding	50 Yards
Magnum Rifles	.300 Win mag, 7mm mag, etc.	3,000 FPS OR LESS	FMJ, HP, TMJ, Lead, Soft Point, Ballistic Tip, Copper Expanding	100 Yards
Shotgun Slugs	.410, 20GA, 12 GA	ALL RIFLED SLUG VELOCITIES	Rifled Slugs	100 yards
Shotgun Buck Shot	.410, 16 GA, 20 GA, 28 GA, 12 GA	All Lead Buck Shot Variants	Buck Shot	30 Yards
Shotgun Bird Shot	.410, 16GA, 20 GA, 28 GA, 12 GA	All Lead Bird Shot Variants	Bird Shot	10 Yards
50BMG & Wildcat	NOT ALLOWED W/ Tee Post	NOT ALLOWED W/ Tee Post	NOT ALLOWED W/ Tee Post	NOT ALLOWED W/ Tee Post

Additional notes:

- RIFLE CALIBERS MUST BE 3,000 FPS OR LESS MUZZLE VELOCITY
- IF OVER 3,000 FPS, INCREASE DISTANCE BY 25 YARDS OVER ADVERTISED DISTANCE FOR EACH ADDITIONAL 100 FPS VELOCITY INCREASE
- Running plates at steeper lean angles will further resist damage from high velocity rounds, HOWEVER: All distances MUST be followed, regardless of which lean angle you choose to run!
- **NEVER ENGAGE TARGETS CLOSER THAN OUR DISTANCE RATINGS**

Distance Considerations:

Velocity kills. Small, fast bullets will cause more damage than larger, slower bullets. When using ANY rifle, ALWAYS ensure the muzzle velocity is 3,000 FPS OR LESS. Damage will occur if you disobey the distance ratings above. While the Exodus Line of target plates and accessories is designed to be safe and high performance, misuse or disobedience to the distance, caliber, or ammunition ratings in this document is DANGEROUS! Misuse, neglect, or destructive behavior is NOT covered under warranty and poses a SERIOUS risk to yourself and others. ONLY USE OUR PRODUCTS AS INSTRUCTED IN THIS DOCUMENT.

Bullet Construction:

The following bullet types are approved for use on the Exodus / A-DAP target plates

- Full Metal Jacket (FMJ)
- Ballistic / Plastic tip hunting ammunition
- Match Grade ammo (Boat Tail Hollow Points)
- Hollow Point Ammunition
- Soft Point Ammunition
- Bi-Metal Ammunition provided the velocity is 3,000 FPS OR LESS muzzle!
 - o See special note below

The Following bullet/ammo types are incompatible with the Genesis Systems AND SHOULD NEVER UNDER ANY CIRCUMSTANCE BE FIRED AT A GENESIS PLATE!!!

- M855 Steel Core Projectiles
- Solid Copper Machined Bullets (non-expanding solid copper)
- Expanding solid copper bullets over posted velocity limits
- SS109
- Russian Steel Core Ammunition
- Incendiary projectiles
- Tungsten core projectiles
- M855A1
- Any Armor Piercing or penetrating bullet construction not listed.
- Stainless Steel shotgun shot (Never acceptable on steel targets)

Special Notes and Considerations:

Hollow point ammunition, especially larger bore calibers, can leave slight impressions on the steel target faces. This is normal and will not create an unsafe condition. If heavy impressions are occurring (i.e. greater than 1/32" depth), increase distance until impressions cease. Shotgun slugs may also exhibit the same tendencies.

NEVER intentionally shoot the TEE post. Ricochet and/damage can and will occur.

Expected wear and tear during use:

Over time it is normal to experience wear and tear on your system. This is expected. During normal use you may see:

- Chipped Powder coat or paint
- Worn out hardware/nuts/and bolts
- Edge chips from close edge impacts
- Chips around UNUSED holes (extra square holes) on target plates
- Worn out 2X4 posts
- Surface deformations on strike plate (OK to use unless craters with a depth of 1/8" or more exist)
- Wear and Tear on Tee Posts (They will occasionally need replaced)

Please note: Our Exodus / A-DAP target plates feature a robust warranty for peace of mind performance. If you want to learn more, follow the link below to our warranty page.

For full information on our warranties, please see our website at:

<https://tatargets.com/warranty/>

Maintenance Considerations:

The Exodus Plates / Systems are fully serviceable. If you are missing components or have damaged components, please reach out to our customer service team for replacement parts OR check our website for replacement parts and components. During use with steel targets, it is **NORMAL** to see chipping of the powder coat on the bases and top brackets. If you desire to touch up your base, you can purchase spray paint on our website.

Other Accessories:

Please consider checking out all our other products in the Exodus & Genesis Line of steel targets. We offer a full line of targets and accessories to add to your range. Train with purpose!

If you have any other questions, please feel free to email our team and we'll be able to further assist you with setting up your new target system.

Customer Service Email: info@tatargets.com

TA Targets

PO Box 212

Womelsdorf, PA 19567

